

Canon

imageRUNNER®
5570 / 6570



CORPORATE
SYSTEMS



meap
POWERED BY I

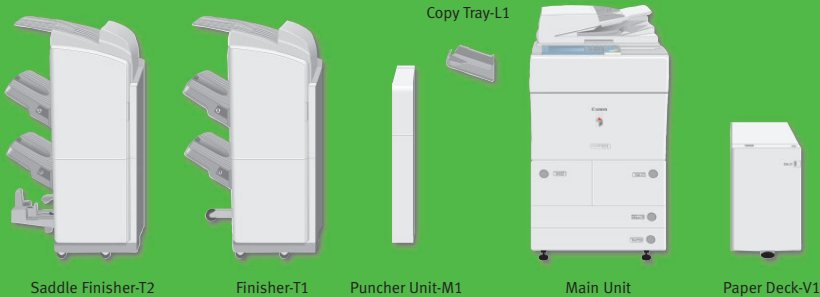
BRINGING INNOVATION TO EVERY HIGH-VOLUME CORPORATE OFFICE

Capture, create, and communicate at network speed with the Canon imageRUNNER® 5570 and imageRUNNER 6570 devices. From high-speed scanning and local document storage to advanced finishing, electronic distribution, and Internet-ready capabilities, these next-generation imageRUNNER systems deliver unmatched performance, durability, and innovation.

Delivering output at speeds of up to 55 and 65 pages per minute, respectively, the imageRUNNER 5570 and imageRUNNER 6570 devices feature Canon's MEAP® (Multifunctional Embedded Application Platform) architecture as well as enhanced device management and security features. Send enhancements allow you to distribute documents instantaneously while usability improvements ensure ease-of-use. Plus, these devices support integration with Web-based information systems. With all these advanced features—and more—your office can achieve a new level of performance with the imageRUNNER 5570 and imageRUNNER 6570 systems.

imageRUNNER 5570/6570 Specifications

Type:	Digital, Multifunction Imaging System	Accessories	Saddle-stitching (Saddle Finisher-T2 Only)
Imaging System:	Laser Dry Electrostatic Transfer	Universal Send™ Kit-D1 (Optional)	Acceptable Paper Sizes: Letter-R, Legal, 11" x 17"
Developing System:	Dry Mono Component Developing System	Sending Methods: E-mail, I-fax, Super G3 Fax (Optional), File Server (IPX, FTP, SMB), User Inbox	Capacity/Tray: 1 to 5 Sheets/25 Sets 6 to 10 Sheets/15 Sets 11 to 15 Sheets/10 Sets
Fixing System:	Induction Heating Fusing System	Address Book Capacity: Max. 1,800 Destinations	Max. Stapling Capacity/Set: 15 Sheets
Image Server Memory:	Standard 512MB RAM/20GB HDD	File Format: Standard: TIFF, PDF, Optional: PDF (OCR)	Folding: V-fold
First-copy Time:	Approx. 3.3 Seconds or Less From Platen Glass	Sending Sizes: Statement to 11" x 17"	Dimension (H x W x D): 42-3/4" x 25-1/2" x 25-7/8" (1,085mm x 648mm x 657mm)
Warm-up Time:	Approx. 30 Seconds or Less	Duplexing Automatic Document Feeder (Standard)	Weight: Finisher T1: Approx. 88.2 lb. (40kg) Saddle Finisher T2: Approx. 163 lb. (74kg)
Copy/Print Speed:	55/65 cpm/ppm (Letter)	Acceptable Originals: Statement to 11" x 17"	Attachable Accessories: Puncher Unit-M1
Acceptable Originals:	Sheets, Books, 3-dimensional Items (Up to 4.4 lb.)	Capacity: 100 Sheets (20 lb. Bond)	Puncher Unit-M1 (Option for Finisher-T1/Saddle Finisher-T2)
Max. Original Size:	11" x 17"	Original Paper Weight: 13 lb. to 32 lb. Bond	Max. Paper Weight: 17 lb. Bond to 110 lb. Index
Max. Copy Size:	11" x 17"	Feeding Speed: 65 Sheets/Minute (Letter)	Paper Sizes: 2-hole: Letter-R, Legal, Executive 3-hole: Letter, 11" x 17"
Min. Copy Size:	3-7/8" x 5-7/8"	Power Source: From Main Unit	Punch Method: Sequential Processing System (One sheet at a time)
Max. Mail Boxes Supported:	100	Copy Tray-L1 (Optional)	Punch Dust Stock: 3,000 Sheets
Max. Copy Reservation:	5 Jobs	Capacity: 250 Sheets (20 lb. Bond)	Power Source: From Main Unit
Actual Resolution:	600 x 600 dpi	Dimension (H x W x D): 7-3/8" x 17-5/8" x 13-3/8" (186mm x 446mm x 340mm)	Dimension (H x W x D): 32-3/4" x 4-1/4" x 24-1/2" (833mm x 107mm x 614.8mm)
Interpolated Resolution:	1200 x 600 dpi (Copy) 2400 x 600 dpi (Print)	Dimension (H x W x D): (When auxiliary tray and auxiliary wire are extended)	Weight: Approx. 15.9 lb.
Halftones:	256 Gradations	Weight: Approx. 1.4 lb. (670g)	Paper Deck-V1 (Optional)
Duplexing:	Standard Automatic Trayless Duplexing	Finisher-T1 and Saddle Finisher-T2 (Optional)	Number of Drawers: 1
Magnification:	25% to 400% (Platen) 25% to 200% (Feeder) (in 1% Increments)	Number of Trays: 3 Trays	Paper Capacity: 3,500 Sheets (20 lb. Bond)
Exposure Control:	Automatic or Manual (9 Levels)	Tray Capacity: No-collate Mode	Paper Size: Letter
Paper Sources	Standard: Dual Front-loading Trays (1,500 Sheets Each) Dual Front-loading Cassettes (550 Sheets Each) 50-sheet Stack Bypass 3,500-sheet Paper Deck (Total: 7,650 Sheets)	Tray A: 250 Sheets (Letter, Statement-R, Executive)	Paper Weight: 17 lb. Bond to 110 lb. Index
Optional:	Multiple Copies: 1 to 999	Tray B: 125 Sheets (Legal, Letter-R, 11" x 17") 1,300 Sheets (Letter, Statement-R, Executive)	Power Source: From Main Unit
Paper Weights (From All Sources):	17 lb. Bond to 110 lb. Index	Tray C: 650 Sheets (Legal, Letter-R, 11" x 17") 2,450 Sheets (Letter, Executive) 1,700 Sheets (Statement-R) 650 Sheets (Legal, Letter-R, 11" x 17")	Dimension (H x W x D): 22-5/8" x 12-3/4" x 23" (574mm x 323mm x 583mm)
Dimensions (H x W x D):	47" x 25-3/8" x 29-1/4" (1192mm x 643mm x 743mm)	Collate and Group Mode: Tray B: 1,300 Sheets (Letter, Executive) 650 Sheets (Legal, Letter-R, 11" x 17") Tray C: 1,700 Sheets (Letter, Executive) 650 Sheets (Legal, Letter-R, 11" x 17")	Weight: Approx. 101 lb. (46kg)
Weight:	Approx. 474 lb. (215kg)	Staple Mode: Tray B/C: 1,300 Sheets/100 Sets (Letter, Executive) 650 Sheets/50 Sets (Legal, Letter-R, 11" x 17")	Super G3 Fax Board-R1 (Optional)
Power Requirements:	120VAC, 60Hz, 16A	Max. Stapling Capacity: Corner/Double: 50 Sheets (Letter, Executive) 30 Sheets (Letter-R, Legal, 11" x 17")	Applicable Line: Public Switched Telephone Network (PSTN)
Power Consumption:	1.85kW (Max.)		Connection Lines: 1
Plug:	NEMA 5-20R		Sending/Original Size: Statement to 11" x 17"
Drum:	Amorphous Silicon – Estimated Yield: 3,000,000 Impressions		Recording/Printing Size: Statement to 11" x 17"
Maximum Duty Cycle:	220,000/250,000 Impressions per Month		Transmission Times**
Toner Yield:	45,000 Images (at 6% Coverage)		ECM-MMR: Approx. 3.2 Seconds
			G3MR: Approx. 13 Seconds
			G3MH: Approx. 13 Seconds
			JBIG: Approx. 2.6 Seconds
			Scan Line Density: Standard: 8 pels/mm x 3.85 lines/mm Fine: 8 pels/mm x 7.7 lines/mm Super-Fine: 8 pels/mm x 15.4 lines/mm Ultra-Fine: 16 pels/mm x 15.4 lines/mm
			Auto Dial Function: Address Book: 1,800 Destinations
			Image Memory: Approx. 8,000 Pages



imageRUNNER®
5570/6570

imageRUNNER 5570/6570 Specifications (Continued)

Canon Multi-PDL Printer Kit-G1 (Optional)

Processor:	Canon Custom Processor—Shared
Memory:	512MB—Shared
Storage:	20GB—Shared
PDL Support:	PCL 5e/6, PostScript® 3™ Emulation, UFR II (Ultra Fast Rendering)
Interface Connections	
Standard:	10/100Base-T (RJ-45), USB 2.0 High Speed
Network OS:	Windows® 98/Me/2000/XP Windows NT® 4.0/Server 2003 Solaris™ 1.1x, 2.5x or later Macintosh® OS 8.0 or later (PPD) Novell® NetWare® v.3.2, 4.1, 4.11, 4.2, 5, 5.1, 6, 6.5 (IPX/SPX™)
Printer Drivers	
UFR II:	Windows 2000/XP Windows Server 2003 Citrix MetaFrame Macintosh OS X (OS 10.1.5 or later)
PCL 5e/6:	Windows 98/Me/2000/XP Windows NT 4.0/Server 2003 Citrix MetaFrame
PS 3 Emulation:	Windows 98/Me/2000/XP Windows NT 4.0/Server 2003 Macintosh OS X (OS 10.2 or later)
Internal Fonts	
PS:	136 Scalable Fonts
PCL 5e/6:	80 Scalable Fonts, 30 Barcode Fonts, 2 OCR Fonts, 10 Bitmap Fonts
Utility Software:	Network ScanGear Remote UI™ NetSpot® Console, NetSpot Job Monitor NetSpot Resource Downloader NetSpot Device Installer USB Class Driver, Fax Driver JBIG ImageViewer Canon LPR 2 Canon NDPS Gateway Canon Font Manager Canon Watermark Add-in DSE (Device Status Extension) Address Book Conversion Utility

imagePASS-M3 (V1.1) (Optional)

Type:	External Stand-alone Controller
Processor:	Intel® Celeron® 2.5GHz
Memory:	256MB
Storage:	40GB HDD
PDL Support:	Adobe® PostScript 3, PCL 5e, PCL 6
Interface Connections	
Standard:	10/100Base-T (RJ-45)
Optional:	Parallel Interface Adapter
Internal Fonts	
PS:	Roman PS Font (Type 1) – 126 Fonts Roman PS Font (True Type) – 10 Fonts 113 Fonts, 32 Barcode Fonts
PCL 5e/6:	
Protocol Stacks	
IPX/SPX:	Ethernet II/Ethernet 802.2/Ethernet 802.3/Ethernet SNAP
TCP/IP:	Ethernet II
AppleTalk:	Ethernet SNAP
SMB:	Ethernet II
Network OS:	Novell NetWare v.3.2, 4.1, 4.11, 4.2, 5, 5.1, 6.0, 6.5 (IPX/SPX) Windows 98/Me/2000/XP Windows NT 4.0 Solaris 2.5.1 or later Apple® Macintosh OS 9.0 or later
Dimensions (H x W x D):	15-1/2" x 6-3/8" x 15-3/4" (394mm x 162mm x 400mm)
Weight:	21 lb. (9.6kg)
Power Requirements:	110 to 240V, 1A
Utility Software:	Network ScanGear Remote UI NetSpot Console, NetSpot Job Monitor NetSpot Resource Downloader NetSpot Device Installer JBIG ImageViewer Canon LPR 2 Canon NDPS Gateway Canon Font Manager DSE (Device Status Extension) Fiery® Downloader Fiery Remote Scan Command WorkStation® E-mail Port Monitor WebTools™ Data Center Package Hot Folders Impose
EFI Options:	

Other Optional Accessories and Utilities

- Accessibility Handle-A1
- Barcode Printing Kit-B1*
- Braille Label Kit-A1
- Card Reader-C1
- Card Reader Attachment-C2
- Card Sets
- Cassette-AB1
- eCopy Suite
- Expansion Bus Board-C1
- imageRUNNER Security Kit-A2
- imageWARE™ Suite
- NetSpot Suite
- Remote Operator's Software Kit-A1
- Removable HDD Kit*
- Tab Feeding Attachment-A1
- USB Application Interface Board-D1
- Universal Send PDF Enhancement Kit-B1
- Voice Guidance Kit-A1*
- Web Access Software-A1

* Not available at time of launch. Please check with your local Authorized Canon Dealer.

** Approximate 3-second-per-page fax transmission time based on ITU-T No. 1 Chart (MMR, Standard Mode) at 33.6 Kbps modem speed when transmitting to another V.34 machine. The Public Switched Telephone Network (PSTN) currently supports 28.8 Kbps modem speeds or lower, depending on telephone line conditions.



1-800-OK-CANON
www.usa.canon.com

Canon U.S.A., Inc.
One Canon Plaza
Lake Success, NY 11042

As an ENERGY STAR® Partner, Canon U.S.A., Inc. has determined that these products meet the ENERGY STAR® guidelines for energy efficiency. ENERGY STAR and the ENERGY STAR mark are registered U.S. marks. Windows and Windows NT are registered trademarks of Microsoft Corporation in the United States and/or other countries. Adobe and PostScript are registered trademarks of Adobe Systems Incorporated in the United States and/or other countries. Apple and Macintosh are registered trademarks of Apple Computer, Inc. Intel and Celeron are registered trademarks of Intel Corporation. eCopy ShareScan is a trademark of eCopy, Inc. Novell and NetWare are registered trademarks of Novell, Inc. in the United States and other countries. IPX/SPX is a trademark of Novell, Inc. Solaris is a trademark of Sun Microsystems, Inc. in the United States and other countries. Fiery and Command WorkStation are registered trademarks, and webTools is a trademark of Electronics for Imaging, Inc. in the U.S. Patent and Trademark Office and/or certain other foreign jurisdictions. CANON, IMAGERUNNER, MEAP, and NETSPOT are registered trademarks, and UNIVERSAL SEND, IMAGEPASS, and the GENUINE logo are trademarks of Canon Inc. in the United States and may also be registered trademarks or trademarks in other countries. IMAGEWARE is a registered trademark of Canon U.S.A., Inc. in the United States and is a trademark of Canon Inc. in certain other countries. REMOTE UI is a trademark of Canon U.S.A., Inc. IMAGEANYWARE is a trademark of Canon. All referenced product names and other marks are trademarks of their respective owners. Specifications subject to change without notice.
©2006 Canon U.S.A., Inc. All rights reserved.

